

# Conservation Mapping Group Update

---

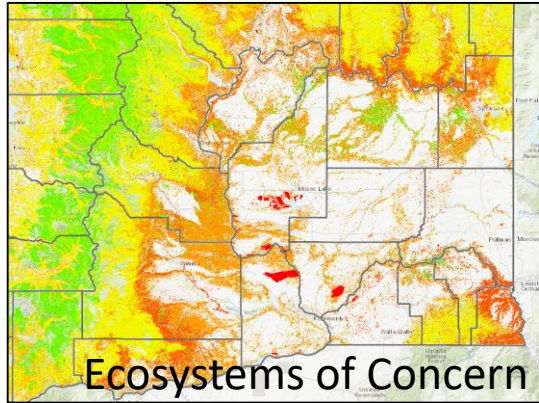
Presented by: Julia Michalak, Ecosystem Services Division, Washington Department of Fish and Wildlife  
Michael Ritter, Energy and Major Projects Division, Washington Department of Fish and Wildlife

Goal: Produce a map that illustrates least conflict with conservation lands based on available spatial data.

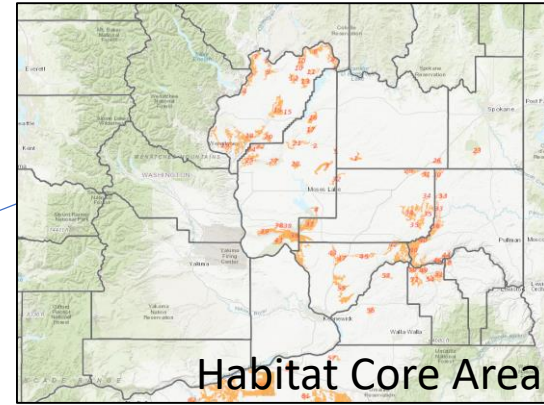


# Conservation Value

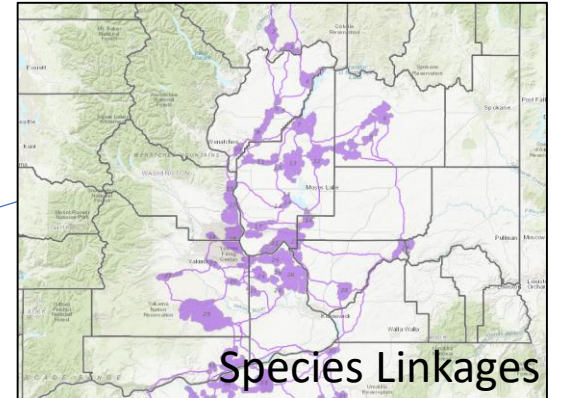
## Modeling Criteria



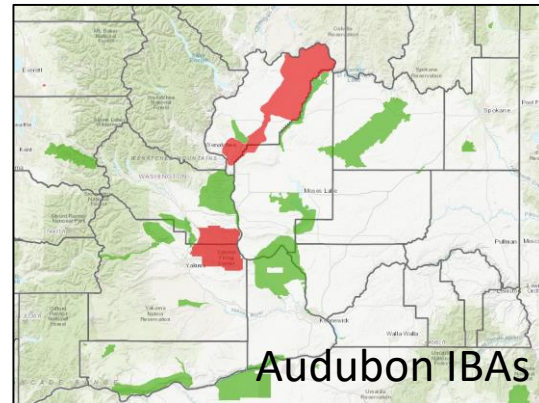
Species Locations  
& Habitat



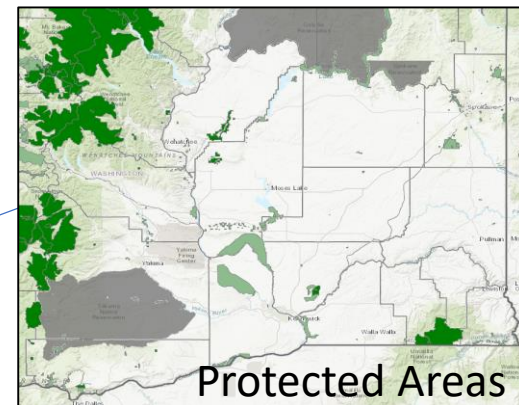
Priority Natural  
Communities



Landscape Connectivity



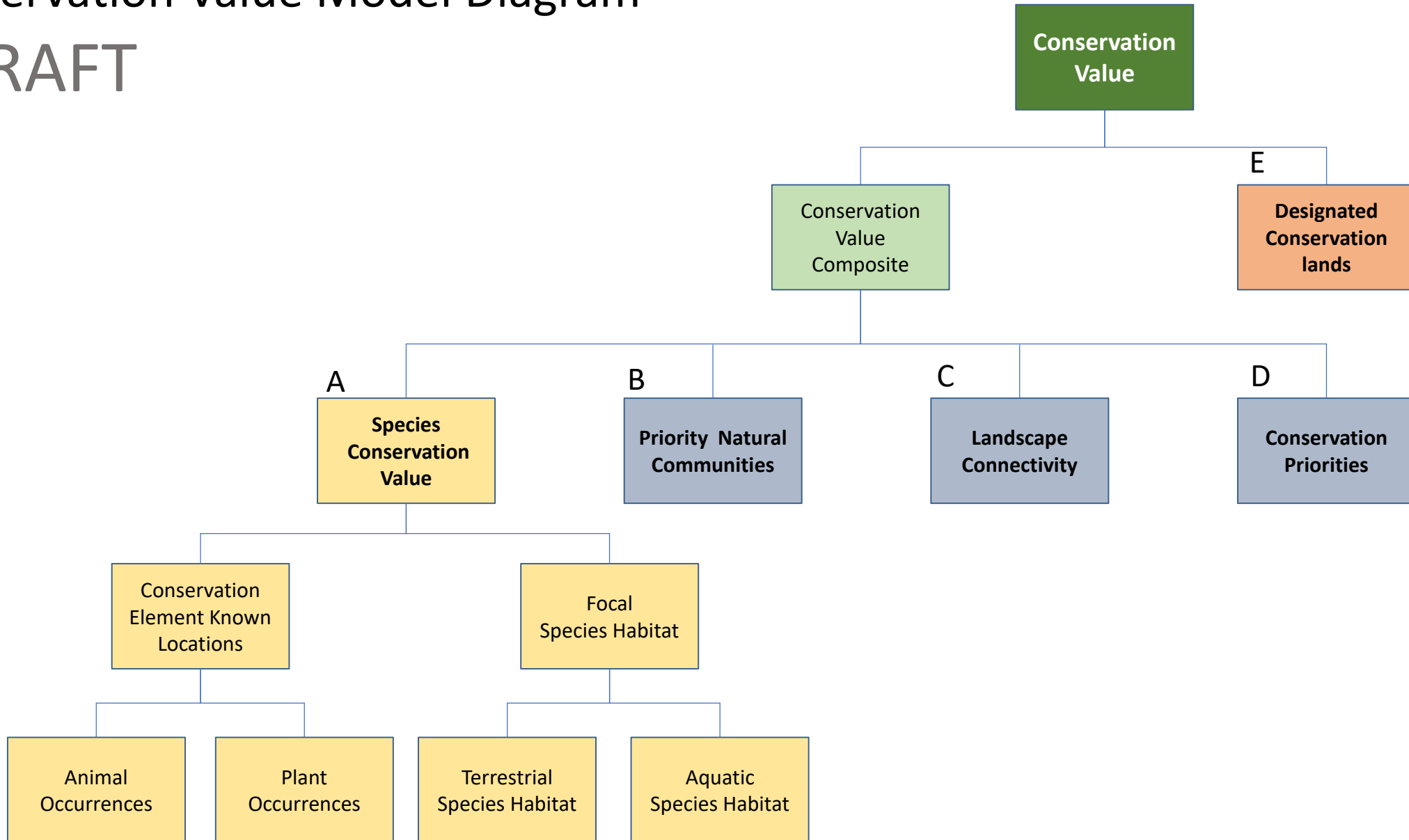
Conservation Priorities



Designated Lands

# Conservation Value Model Diagram

DRAFT



# Species Occurrences (Points) – Testing How Best to Include in the Model

---

- Focus on Listed, Candidate, and Other Species of Interest
- Mapping species based on their irreplaceability and vulnerability



# Species Habitats (Polygons) – Test Group



Listed Species	Candidate Species	Other Species of Interest
Pygmy Rabbit	Black-tailed Jackrabbit	Bighorn Sheep
	White-tailed Jackrabbit	Elk
	Townsend's Ground Squirrel	Mule Deer
	Washington Ground Squirrel	
	Townsend's Big-eared Bat	
Columbian Sharp-tailed Grouse	Burrowing Owl	
Ferruginous Hawk	Golden Eagle	
Greater Sage Grouse	Loggerhead Shrike	
Sandhill Crane	Sage Thrasher	
	Sagebrush Sparrow	
Northern Leopard Frog	Sagebrush Lizard	
	Sharp-tailed Snake	
Wetlands		
Waterfowl Concentrations		

# Next Steps

---

- Testing species point locations and habitat polygon inputs
- Acquire and include botanic heritage data
- Review and incorporate priority natural habitats
- Review and incorporate landscape connectivity
- Review and incorporate conservation priorities mapped by others
- Develop model for review in stages
- Evaluate and adjust model threshold and weight settings

